



**BEIJING YANDIAO CNC MACHINE CO.,LTDs**

No.6,Daxingzhuang,Songzhuang Industrial Zone.Tongzhou District,Beijing,China 101118

TEL: +86-10-65568853

FAX: +86-10-63321717

Mobil/Wechat/Whatsapp number :+86 156 0021 6876

Contact person: Miss Sunny

---

## **Handheld 3D scanner**

### **Part I:**

**Payment Terms:** 100% payment by T/T in advance

### **Part II: Machine details:**

#### **1. Machine photos:**



**2. Delivery time:** within 2 days after receiving full payment.

**3. Packages:** Carton box

(GW:3.5kgs, Size: 39\*33\*16cm)

#### 4. Delivery terms:

1) **Delivery ways** : by international express ( DHL ,Fedex,TNT, UPS and so on )

2)**Port of Departure** : Beijing city, China

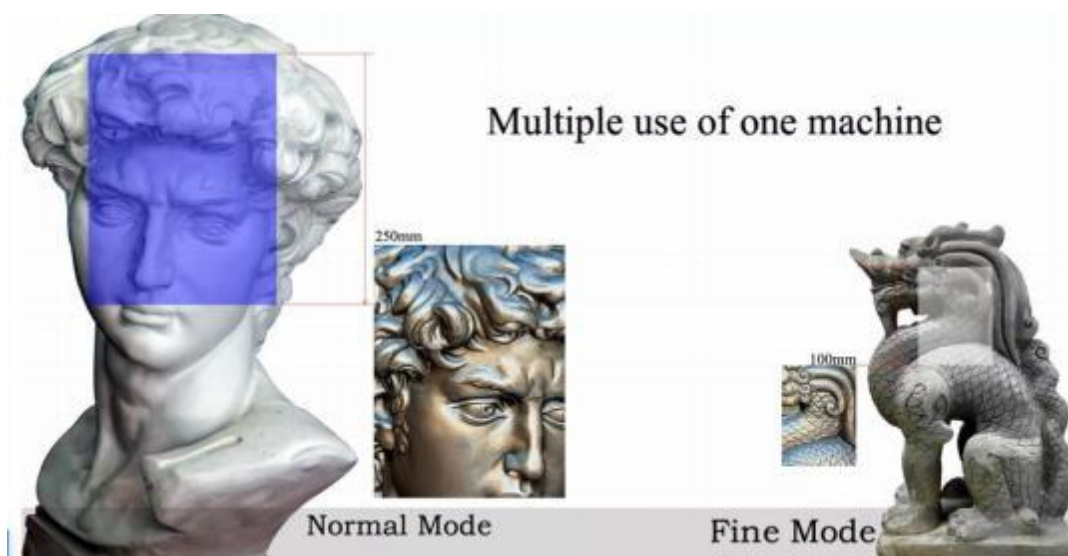
**5 .Supply documents:** Commercial invoice , Packing list , Bill of lading ,  
Certificate of Origin and other required documents

#### 6. Product parameters:

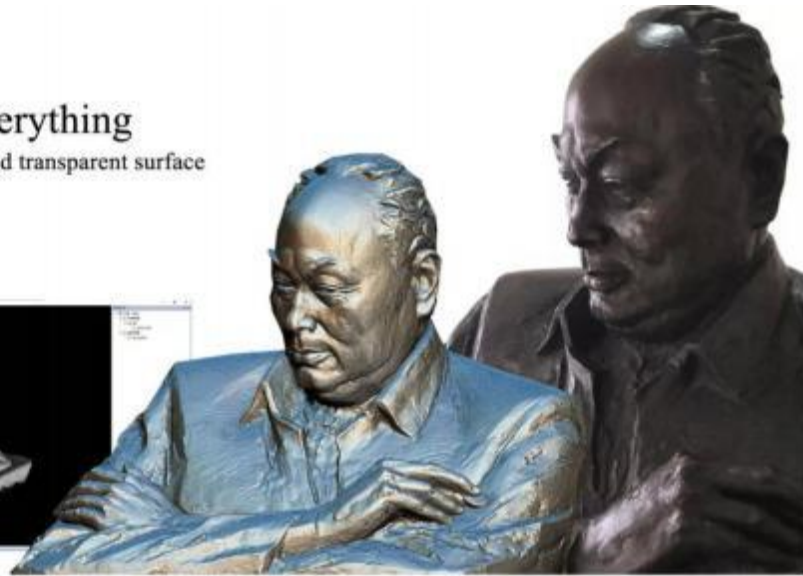
Scope	250mm	100mm
Dot pitch	0.25mm	0.12mm
Precision	0.1mm	0.04mm
Adaptation	400~1500mm	40~400mm
Sensor	ONSEMI 1310000pixel 600fps	
Raster	TI 1280*800 Led White light	
Lens	12mm Standard optical measuring lens	
Communication Interface	USB 2.0	
power supply	12V 5A/100~240V 60HZ/1.5A	
Scan speed	0.03s Non-contact structured smooth scanning	
Scanning method	Non-contact structured smooth scanning	
Working distance	490mm	
Depth of field	490mm±30%	
weight	0.9kg	
Size	240*165*55mm	
Splicing mode	Marking point splicing / feature splicing	
Global registration	Support	
Temperature compensation	Support	
Auxiliary positioning	Double laser spot	
Output format	AC/ASC/OBJ/STL/PLY	
Extended support	Can provide third-party API development interface, extended support for optical tracking photogrammetry robotic arm, etc.	
Certification	CE FCC WEEE CNAS National laboratory third-party certification	

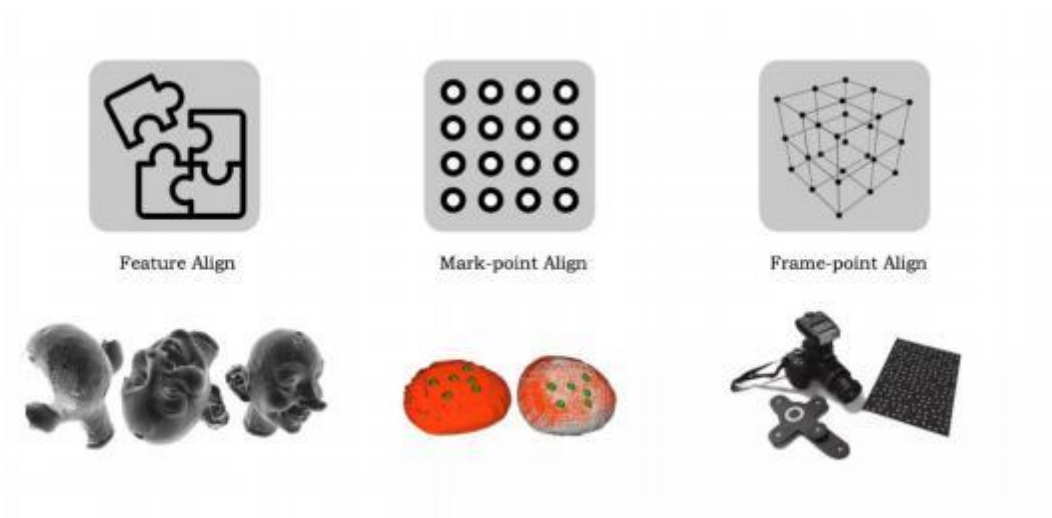
## 7. Machine Description

JCXSCAN-S is a highly integrated and easy-to-operate handheld 3D scanning system designed based on real-time 3D reconstruction application scenarios. It can achieve 0.03 seconds high-speed scanning and one-key automatic global registration of point clouds, denoising fusion, lossless meshing, and compensation Hole, curvature sampling generates STL standard three-dimensional format. The system is developed based on high-speed structured light phase grating 3D reconstruction technology, which not only has the convenience of hand-held but also can maintain the sub-pixel high-precision characteristics of phase structured light. The system supports features, mark points and frame three splicing methods that support normal and fine scanning at the same time. Mode (100mm/250mm), which can scan both fine sculptures and small and medium-sized molds. In addition, the system can be extended to support the photogrammetric system, so as to adapt to the application of 3D scanning scenes with larger scope and higher precision requirements, and widely serve in the application scenes of 3D reconstruction in various industries.

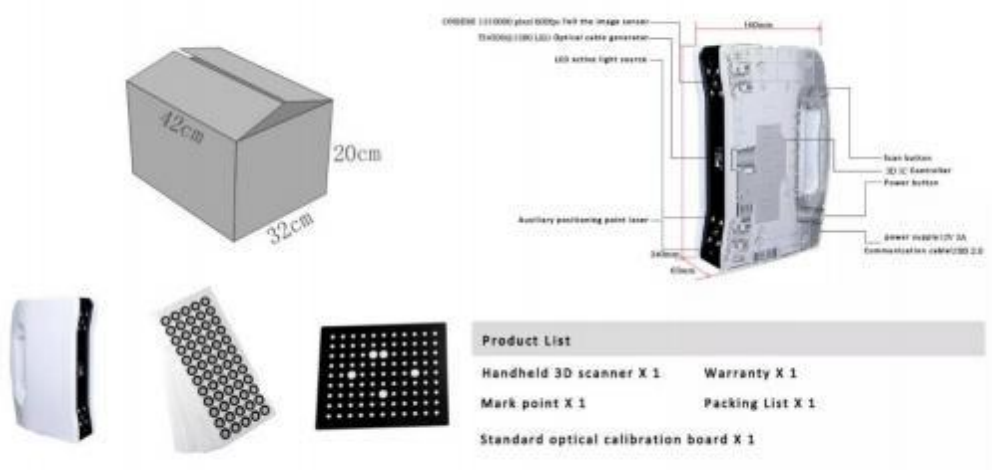


Scan everything  
except for mirror and transparent surface





### One-click scanning and Automatic meshing



## 8. Machine Application



Innovative education industry applications



Three-dimensional digitization of patterned chairs



Carp 3D Scanning Digitization



Reverse design of auto parts



Digitization of 3D scanning of shovel teeth



Three-dimensional digitization of hip joint correction



Simulation robot



Three-dimensional digitization of Liuli Pixiu



Three-dimensional detection of CT data of artificial orthopedic joints

## 9. After-sales service:

- 1) 24 hours technical support by email or calling
- 2) Use the English Manual and CD video to know the operating and maintaining.
- 3) Seller supply maintenance all the time even out of warranty



## **10. Warranty Terms:**

**Guarantee time:** One year from the date of seller receiving machine

**Guarantee range:** Under the Normal working condition, the whole machine is in the guarantee range.

## **Part III Contact information**

### **Contact:**

**Company name :** Beijing YanDiao CNC Machine Co.,LTD

**Address:** No.6,Daxingzhuang,Songzhuang Industrial Zone.Tongzhou District,Beijing,China101118

**TEL:** +86-10-65568853      **FAX:** +86-10-63321717

**Contact person :**Sunny

**Wechat /Whatsapp/Tel :** 0086 156 0021 6876

**E-mail:**Sunny@jxcnc.com

**BEIJING YANDIAO CNC MACHINE CO.,LTD**

